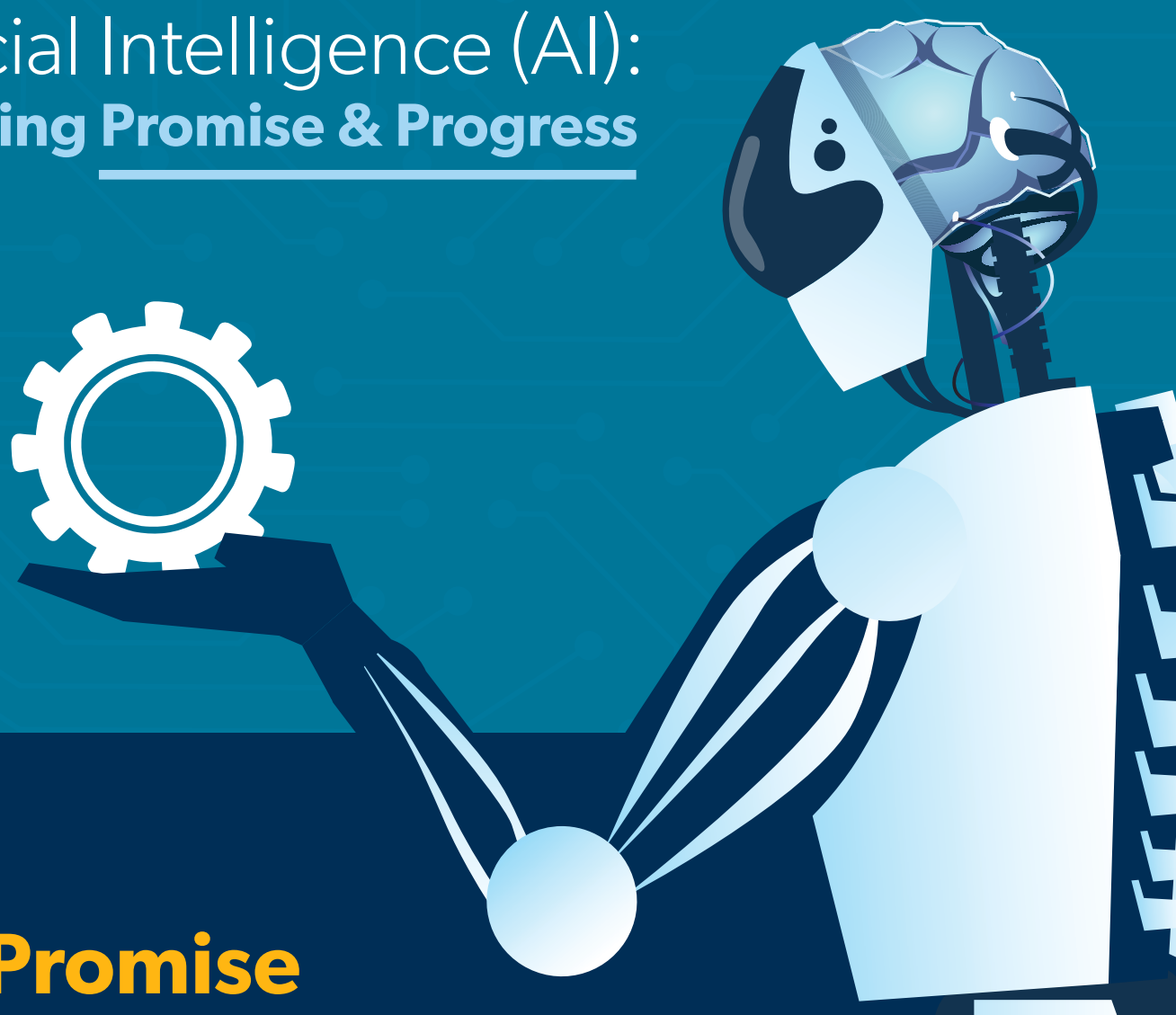


# Artificial Intelligence (AI): Balancing Promise & Progress



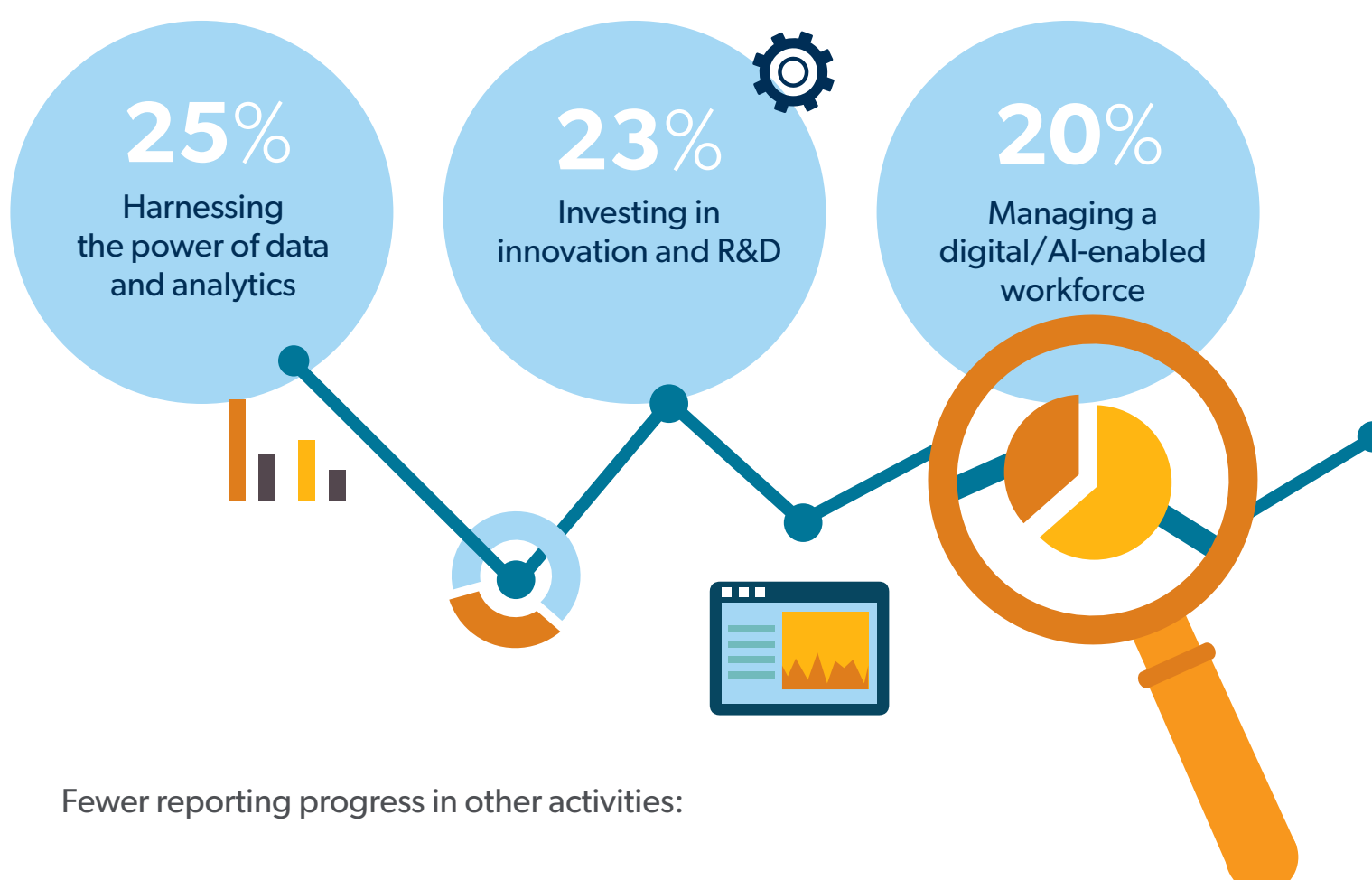
## The Promise

(Percentage of employers expecting benefits from AI in key talent functions)

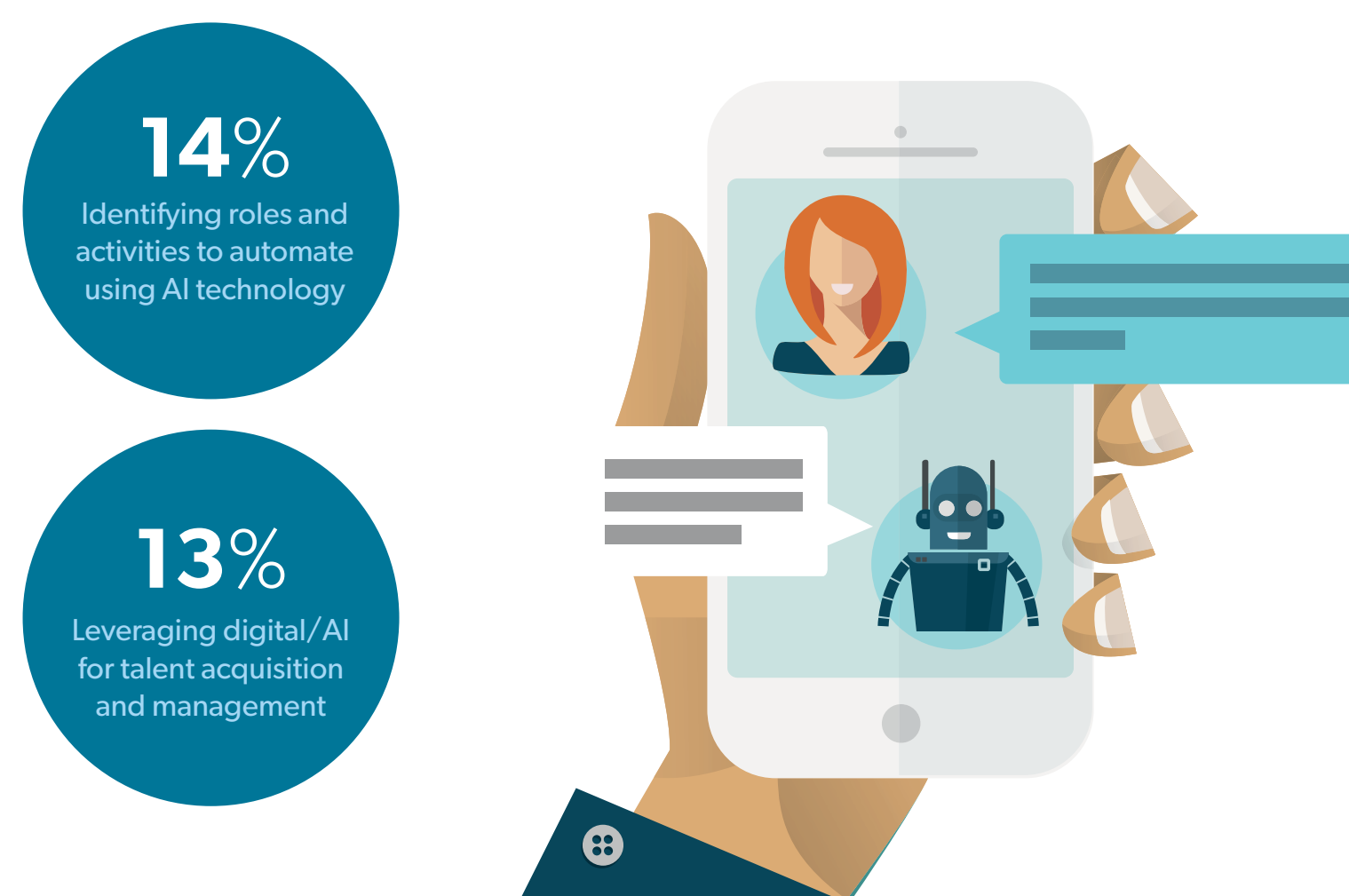


## The Progress

(Percentage of employers reporting significant progress to key talent and business priorities)



Fewer reporting progress in other activities:



Find out what's driving competitive advantage  
in talent today.

[AllegisGroup.com/TalentAcquisition](https://www.allegisgroup.com/TalentAcquisition)